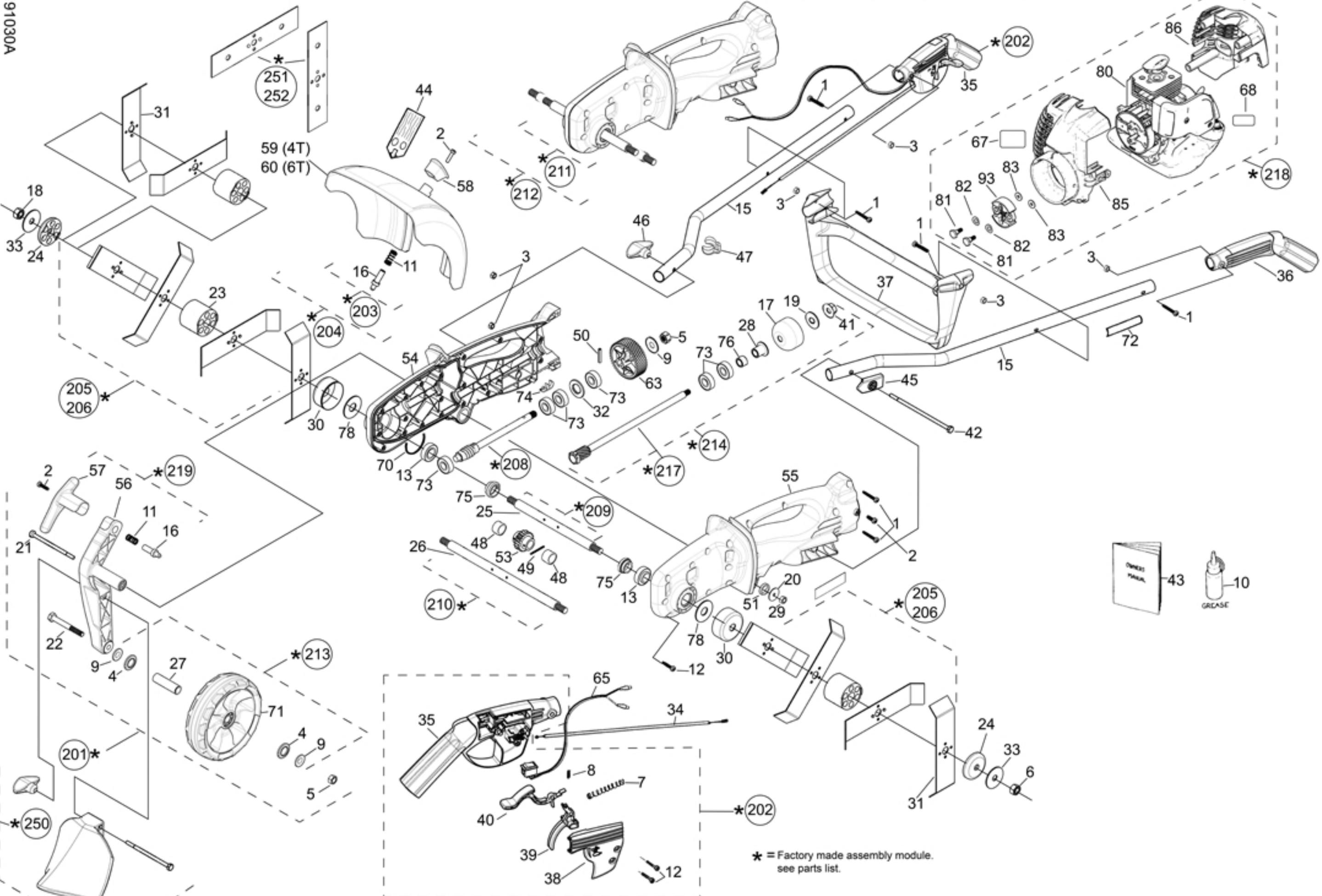


738 TILLER WITH ATOM 26FC-4/26FC-5 COMMERCIAL ENGINE

191030A



ATOM MODEL: 738 TILLER with 26FC4/FC5 engine

PART NO: 21738FC-4 & 21738FC-5

Key	Part No	Substitute Part No	Description	Key	Part No	Substitute Part No	Description	Key	Part No	Substitute Part No	Description
1	40650		SCREW M5 x 36mm TORX-25	32	62982		BEARING WASHER 32x18x1.6	69	63410		ASSY TILLER WORM&SHAFT
2	40651		SCREW M6 x 16mm TORX	33	62983		WASHER HARD 54x12.2x2	70	63439		SEAL U GEAR BOX TILLER
3	40652		NUT NYLOC 5mm	34	63002		CABLE THROTTLE 968mm	71	63445BP	64967BP	WHEEL BLACK
4	42111		WHEEL SEAL 27.2 x 12.6	35	63017BS		HANDLE RH with RUBBER	72	63466B		LABEL HANDLE SAFETY
5	43172		NUT NYLOC 3/8" UNC	36	63019BS		HANDLE LH with RUBBER	73	63474		BEARING 32 x 10 x 12
6	43173		NUT M12 x 1.75 RH	37	63020WE		HANDLE CROSS BRACE	74	63533WE		HOOK EDGER CABLE BODY
7	43198		TRIGGER COMP SPRING	38	63021BP		COVER RH HANDLE	75	63771		SPACER GREASE SAVER TILLER
8	43199		SPRING SMALL	39	63022WN	63883S	SET TRIGGER & INTERLOCK	76	63772		SPACER MAIN SHAFT TILLER
9	43218		WASHER FLAT 3/8"	40	63023WN	63883S	SET TRIGGER & INTERLOCK	77	63867		NUT 3/8" HOLDING
10	43227		GREASE & DISPENSER	41	63032	43163	NUT FLANGE 3/8 UNC	78	63868		WASHER 25x17x 2
11	43452		HT ADJ ARM COMP SPRING	42	63049		BOLT HEX 6.5 x 1/4 BSW	80	65195		ENG ATOM 26FC-5 w/o COVERS
12	43790		SCREW 5.5MM FOR PLASTIC	43	21775		MANUAL ALL MODELS	81	63553		BOLT CLUTCH
13	43868		BEARING 6003-2RS 4mm	44	63065		LABEL WARN TILLER GUARD	82	63554		CLUTCH WASHER WAVY
14	44006		NUT 1/4 UNC	45	63187BN		CAPTIVE PLATE 1/4"HEX PIECE	83	63556		WASHER CLUTCH FLAT
15	44060		UNIVERSAL HANDLE TUBE	46	63488A		ASSY HANDLE KNOB W/NUT	84	63553		BOLT CLUTCH
16	62723		HEIGHT ADJ ARM PIN	47	63217BN		CLIP - HANDLE CABLE & WIRE	85	63393CN		FRONT COVER BLUE
17	44318		DRUM CLUTCH CUP 54mm	48	63261		SPACER TILLER GEAR	86	63394CN		BACK COVER BLUE
18	45112		NUT M12 x 1.75 LH	49	63269		PIN ROLL 6 x 30	93	63555A		CLUTCH 52mm OD
19	63277		WASHER CLUTCH	50	63275		PIN ROLL 5 x 30				
20	62795		WASHER 30 X 1.6 X 1/4 HOLE	51	63224		O-RING 20 x 2mm				
21	62843		HEX BOLT 3.5 X 1/4 BSW	53	63368		GEAR 10:1 WORM DRIVE				
22	62844		HEX BOLT 3 X 3/8" BSW	54	63912WN		SET LH+RH TILLER GREY				
23	62851WP		TINE SPACER LARGE 45.5MM	56	63376WP		ARM WHEEL TILLER				
24	62852WP		TINE SPACER SMALL 10MM	57	63377WP		HEIGHT ADJ HANDLE ARM				
25	62891		SHAFT TINE 250MM	58	63378WP		KNOB COVER TILLER				
26	62892		SHAFT TINE 350MM	59	63380WE	63872WE	COVER TINE 250mm				
27	62903		SPACER WHEEL 41.5MM	60	63381WE	63873WE	COVER TINE 350mm				
28	62912		FLANGE HUB	61	63384		GEAR SEAL TILLER				
29	62919		NUT NYLOC 1/4" UNC	63	63780		GEAR SPUR 48T				
30	62921		DRUM TINE 17mm	64	63387	63411A	ASSY TILLER WORM & SHAFT				
31	62948		TINE TILLER	65	63400		ROCKER SWITCH & WIRE				

FOR INFORMATION ON model 738 26FC-5 engine, see ref 772 under 'Petrol Engines, Parts and Drawings.'
This engine is an ATOM 26FC-5 commercial engine.