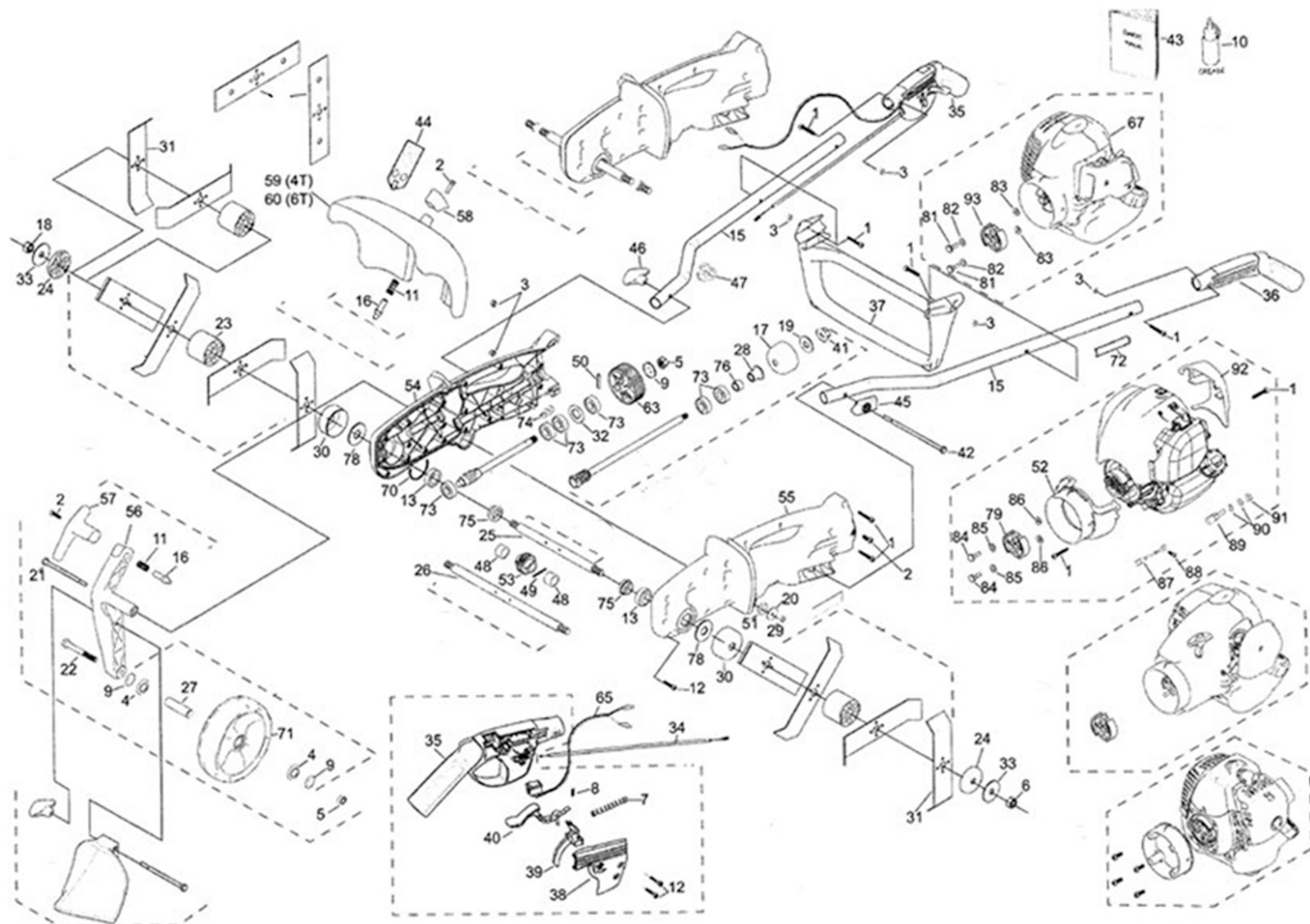


ATOM 740 TILLER WITH HONDA GX25 ENGINE



18/08/2021

ATOM MODEL: 740 TILLER with GX25 engine

PART NO: 21740

Key	Part No	Substitute Part No	Description	Key	Part No	Substitute Part No	Description	Key	Part No	Substitute Part No	NLA	Description
1	40650		SCREW M5x36 TORX25	32	62982		WASHER BEAR 31.8x18.5x1.6	63	63780			GEAR SPUR 48T
2	40651		SCREW M6x16 TORX25	33	62983		WASHER BLADES 54x12.2x2	64	63978A			ASSY HELIX GEAR+SHAFT
3	40652		NUT NYLOC M5	34	63002		CABLE THROTTLE 910+62	65	63400			ROCKER SWITCH WITH WIRE
4	42111		WHEEL SEAL 27.2 x12.6	35	63017BS		HANDLE RH WITH RUBBER	66	63411			ASSY TIL WORM&SHAFT
5	43172		NUT NYLOC 3/8 UNC	36	63019BS		HANDLE LH WITH RUBBER	67	65195A			ENG ATOM 26FC5 w/COVERS
6	43173		NUT M12x1.75 RH	37	63020WE		HANDLE CROSS BRACE	69	63410			SHAFT T PINION WORM
7	43198		TRIGGER COMP SPRING	38	63021BP		COVER RH HANDLE	70	63439			SEAL U GEAR BOX TILLER
8	43199		SPRING SMALL INTERLOCK	39	63883S		SET TRIG & INTERLOCK	71	64967BP			EDGER DOM WHEEL
9	43218		WASHER 3/8 ZP 20x1.8x26	40	63883S		SET TRIG & INTERLOCK	72	64378			LABEL WARN BLADE COVER
10	43227		GREASE & DISPENSER	41	43163		NUT FLANGE 3/8 UNC	73	63474			BEARING 32x10x12
11	43452		HT ADJ ARM COMP SPRING	42	63049		BOLT HEX 6.5x1/4 BSW	74	63533WE			HOOK EDGER CABLE BODY
12	43790		SCREW M5.5x22	43	21775		MANUAL ALL MODELS	75	63771		X	SPACER GREASE SAVER TILLER
13	43868		BEARING 6003-2RS 4.5x17ID	44	63065		LABEL WARN TILLER GUARD	76	63772			SPACER MAIN SHAFT TILLER
14	44006		NUT 1/4 UNC	45	63187BN		CAPTIVE PLATE 1/4 HEX BOLT	77	63867			NUT 3/8 HOLDING
15	44060		HANDLE TUBE	46	63488A		ASSY HANDLE KNOB+NUT	78	63868			WASHER 25x17x2
16	62723		HEIGHT ADJ ARM PIN	47	63217BN		CLIP-HANDLE CABLE&WIRE	79	63555A			CLUTCH ASSY GX25-26KZ-ATOM
17	44318		DRUM CLUTCH CUP 54mm	48	63261		SPACER TILL GEAR STEEL	80	65195A			ENG ATOM 26FC5 w/COVERS
18	45112		NUT M12x1.75 LH	49	63269		PIN ROLL 6x30 TL	81	63553			FC/HPE CLUTCH BOLT M6
19	63277		WASHER CL DRUM 12x27x2	50	63275		PIN ROLL 5x30 DR/TL	82	63554			WASHER WAVY
20	62795		WASHER 30x1.6x1/4	51	63224		O-RING 20x2mm	83	63556			WASHER FLAT
21	62843		HEX BOLT 3.5x1/4 BSW	52	63360RN		MOUNT ENGINE KZ26	84	63553			FC/HPE CLUTCH BOLT M6
22	62844		HEX BOLT 3x3/8 BSW	53	63368		GEAR 10:1 WORM DRIVE	85	63554			WASHER WAVY
23	62851WP		TINE SPACER LARGE 45.5mm	54	63912WN		SET LH+RH TILLER GREY BODY	86	63556			WASHER FLAT
24	62852WP		TINE SPACER SMALL 10mm	55	63912WN		SET LH+RH TILLER GREY BODY	87	63355			GROUND WIRE
25	62891		SHAFT TINE 250mm	56	63376WP		ARM WHEEL TILLER	88	43181			SCREW M5x15
26	62892		SHAFT TINE 350mm	57	63377WP		HEIGHT ADJ HANDLE ARM	89	62968			PRO CARBY CABLE CONN M6x1.0
27	62903		WHEEL TUBE 41.5mm	58	63378WP		KNOB COVER TILLER	90	63457			WASHER 6.4x12.5x1.5
28	64119		HUB SINTERED 11.5mm	59	63380WE		COVER TINE 250 (U-GAP 87)	91	63169			NUT M6x1.0
29	62919		NUT NYLOC 1/4 UNC	60	63381WE		COVER TINE 350 (U-GAP 87)	92	43966RN			GX25 AIR DEFLECTOR
30	62921		TINE CUP	61	63384		GEAR SEAL TILLER	93	63555A			CLUTCH ASSY GX25-26KZ-ATOM
31	62948		TILLER TINE	62	63781		DR GEAR HELIX 10T					

For information on the GX25 Honda engine used on this Tiller go to Ref 764 at 'Petrol Engines, Parts and Drawings.'