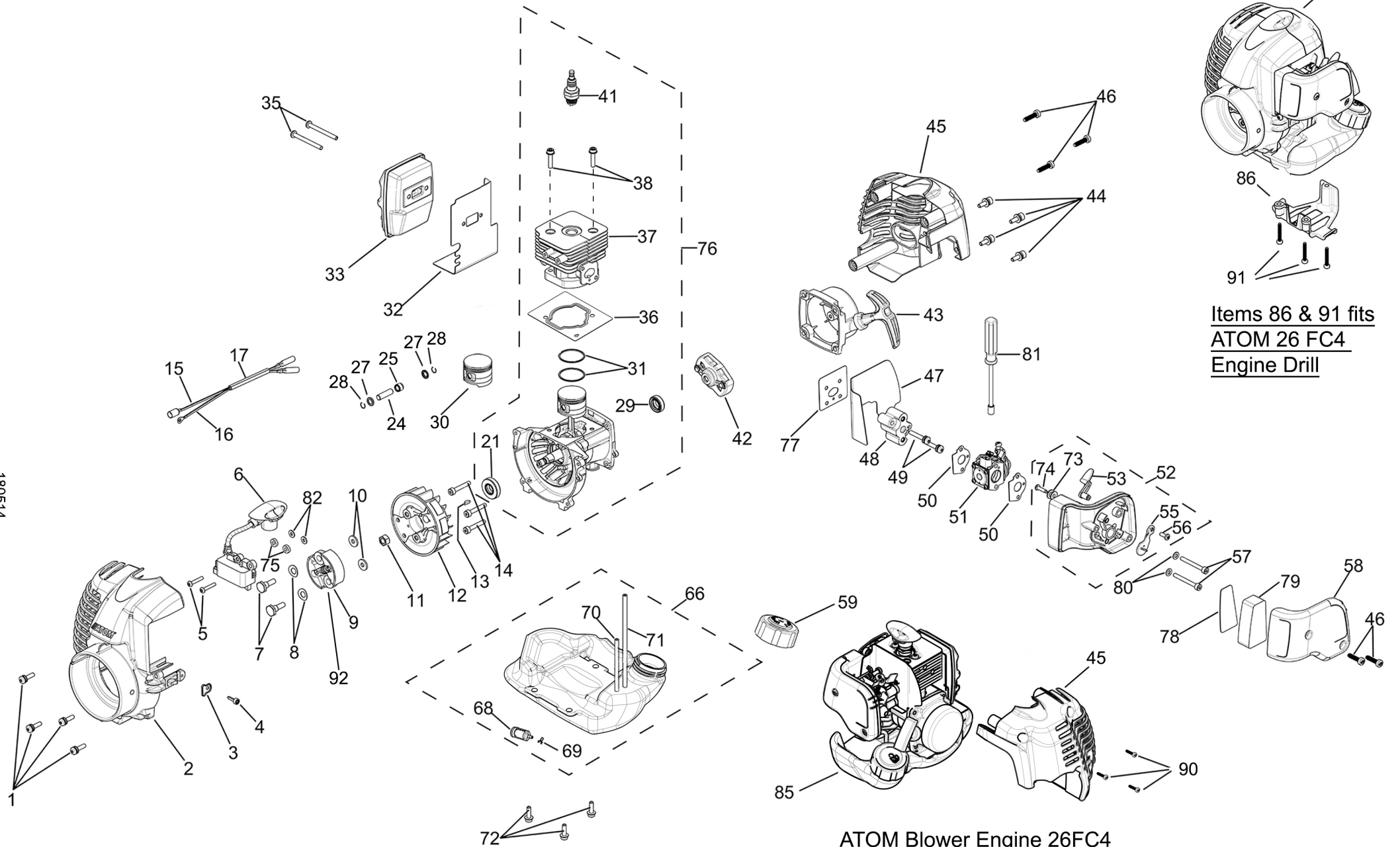


ATOM 26FC-4 REFERENCE No: 771

ATOM 26 FC4
for all Edgers & Tillers



Items 86 & 91 fits
ATOM 26 FC4
Engine Drill

ATOM Blower Engine 26FC4

Does not involve key part numbers:
1, 2, 3, 4, 7, 8, 9, 46 & 92

ATOM PRODUCT: ATOM 26FC-4 26cc ENGINE

REF NO: 771

| Key | Part No | Substitute Part No | NLA | Description | Order Part | Key | Part No | Substitute Part No | NLA | Description | Order Part | Key | Part No | Substitute Part No | NLA | Description | Order Part |
|-----|---------|--------------------|-----|----------------------------|------------|-----|---------|--------------------|-----|-----------------------------|------------|-----|---------|--------------------|-----|--------------------------|------------|
| 1 | 63547 | | | SCREW WSR M5 x 20 | | 35 | 63581 | | | SCREW M5 x 50 | | 72 | 63618 | | | SCREW WSR M5 x 16 | |
| 2 | 63393CN | | | COWL FRONT 26FC4/5 BLUE | | 36 | 65120 | | | GASKET CYL BASE 26FC4/5/HPE | | 73 | 63619 | | | FC/HPE FLANGE PULLEY | |
| 3 | 63549 | | | FC/HPE CLAMP RETAINER | | 37 | 65146 | | | CYLINDER FC4 10 FIN | | 74 | 63620 | | | ST SCREW STEEL | |
| 4 | 63550 | | | FC/HPE SCREW 13.5 | | 38 | 63584 | | | FC/HPE SCREW M5x22 | | 75 | 63621 | | | SPACER IGNITION MODULE | |
| 5 | 63551 | | | FC/HPE SCREW M4x22 | | 41 | 63587 | | | FC/HPE SPARK PLUG | | 76 | 65138A | | | ASSY SHORT MOTOR 26FC4 | |
| 6 | 65147 | | | DIGITAL IGNITION V2 | | 42 | 64929 | | | PAWLS ASSY 52 OD | | 77 | 63623 | | | GASKET CYLINDER/MANIFOLD | |
| 7 | 63553 | | | CLUTCH BOLT M6 | | 43 | 64928 | | | RECOIL START 26HPE 35 HT | | 78 | 63624 | | | FC/HPE MESH METAL | |
| 8 | 63554 | | | CLUTCH WASHER WAVY | | 44 | 63590 | | | ST SCREW WSR M5 x 16 | | 79 | 63625 | | | FC/HPE FOAM FILTER | |
| 9 | 63555A | | | CLUTCH ASSY GX25/KZ26/ATOM | | 45 | 63394CN | | | COWL REAR 26FC4/5 BLUE | | 80 | 63626 | | | WASHER 10 x 5 x 1 | |
| 10 | 63556 | | | CLUTCH WASHER FLAT | | 46 | 43790 | | | SCREW M5.5 x 22 | | 81 | 63627 | | | FC/HPE CARBY JET ADJ | |
| 11 | 63557 | | | FC/HPE NUT ROTOR | | 47 | 63593 | | X | GASKET CYLINDER AIR | | 82 | 63628 | | | WASHER | |
| 12 | 64974 | | | ROTOR FAN ATOM | | 48 | 63594 | | | MANIFOLD CARBY | | 84 | 65195A | | | ENG ATOM 26FC5 w/COVERS | |
| 13 | 63559 | | | KEY WOODRUFF S43C | | 49 | 63595 | | | FC/HPE SCREW WSR M5x31 | | 85 | 65134 | 65195 | | ENG 26FC5 w/o COVERS | |
| 14 | 63560 | | | SCREW M5 x 30 | | 50 | 63596 | | | FC/HPE GASKET MANIFOLD | | 86 | 64226WE | | | DR TANK GUARD ATOM ENG | |
| 15 | 63561 | | | FC/HPE LEAD WIRE | | 51 | 65130 | 65141 | | ATOM CARBY 10mm VENTURI | | 90 | 64194 | | | SCREW M4.5x19.50 | |
| 16 | 63562 | | | FC/HPE LEAD WIRE | | 52 | 63598WN | | | ASSY CARB FILTER BODY GREY | | 91 | 40650 | | | SCREW M5x36 | |
| 17 | 63563 | | | FC/HPE SLEEVE | | 53 | 63599 | | | CHOKE LEVER | | 92 | 64943A | | | CLUTCH HEAVYSPRING | |
| 21 | 63567 | | | SEAL 28x12 FLYWHEEL END | | 55 | 63601 | | | FC/HPE CHOKE PLATE | | | | | | | |
| 24 | 63570 | | | PIN WRIST | | 56 | 63602 | | | FC/HPE ST SCREW M4 | | | | | | | |
| 25 | 63571 | | | NEEDLE BEARING | | 57 | 63603 | | | SCREW FILTER BODY | | | | | | | |
| 27 | 63573 | | | WASHER KEEPER | | 58 | 63604WN | | | FC4/5/HPE FILTER COVER GREY | | | | | | | |
| 28 | 63574 | | | CIRCLIP WRIST PIN | | 59 | 63605 | | | FUEL CAP ASSY | | | | | | | |
| 29 | 63575 | | | SEAL 22x12 START END | | 66 | 65148 | | | FC4/5 ASSY FUEL TANK | | | | | | | |
| 30 | 63576 | | | FC/HPE PISTON | | 68 | 63614 | | | FILTER FUEL | | | | | | | |
| 31 | 63577 | | | FC/HPE RING-PISTON 1pk | | 69 | 63615 | | | CLIP-HOSE-STEEL | | | | | | | |
| 32 | 63578 | 65121 | | GASKET MUFFLER FC4/5/HPE | | 70 | 63616 | | | FC/HPE TUBING FUEL | | | | | | | |
| 33 | 65149 | | | FC4 MUFFLER ASSY | | 71 | 63617 | | | FC/HPE TUBING FUEL | | | | | | | |